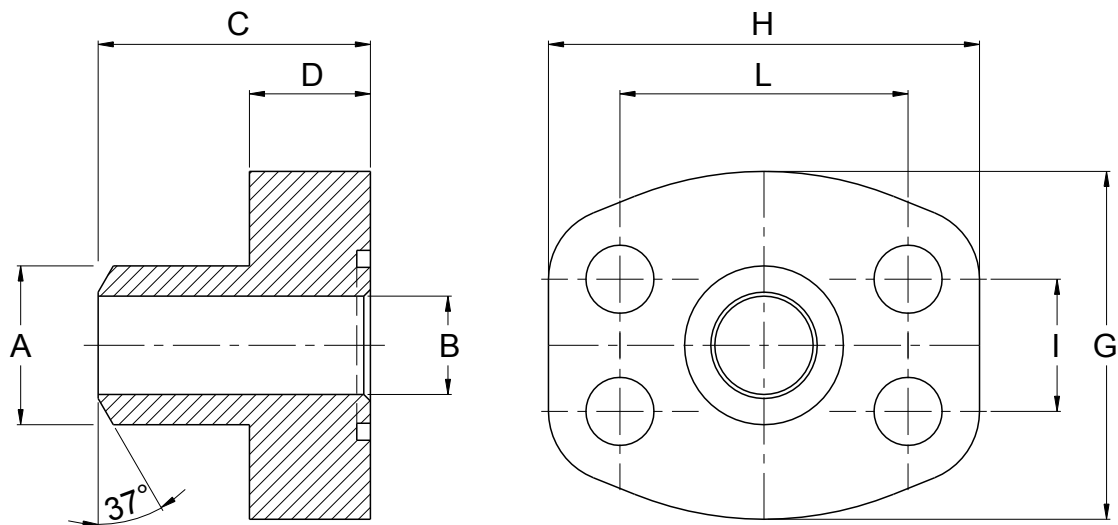


| Code de commande       | Ancien code   | SAE   | Dimensions en mm |     |    |    |     |     |       |        | Vis CHC Classe 8.8 | O-Ring 70 shore | Pression de service (bar) |
|------------------------|---------------|-------|------------------|-----|----|----|-----|-----|-------|--------|--------------------|-----------------|---------------------------|
|                        |               |       | A                | B   | C  | D  | G   | H   | I     | L      |                    |                 |                           |
| <b>200.203.J3012ST</b> | <b>B6-001</b> | 1/2"  | 21,6             | 13  | 36 | 16 | 48  | 58  | 17,48 | 38,10  | M8x30              | 4075            | 345                       |
| <b>200.203.J3034ST</b> | <b>B6-002</b> | 3/4"  | 27,2             | 19  | 36 | 18 | 50  | 67  | 22,23 | 47,63  | M10x35             | 4100            | 345                       |
| <b>200.203.J3100ST</b> | <b>B6-003</b> | 1"    | 34,5             | 25  | 38 | 18 | 54  | 71  | 26,19 | 52,37  | M10x35             | 4131            | 345                       |
| <b>200.203.J3114ST</b> | <b>B6-004</b> | 1"1/4 | 42,8             | 31  | 41 | 21 | 70  | 81  | 30,18 | 58,72  | M10x40             | 4150            | 275                       |
| <b>200.203.J3112ST</b> | <b>B6-005</b> | 1"1/2 | 48,6             | 38  | 44 | 25 | 78  | 95  | 35,71 | 69,85  | M12x45             | 4187            | 200                       |
| <b>200.203.J3200ST</b> | <b>B6-006</b> | 2"    | 61               | 50  | 45 | 25 | 90  | 104 | 42,88 | 77,77  | M12x45             | 4225            | 200                       |
| <b>200.203.J3212ST</b> | <b>B6-007</b> | 2"1/2 | 76,6             | 63  | 50 | 25 | 102 | 116 | 50,80 | 88,90  | M12x45             | 4275            | 170                       |
| <b>200.203.J3300ST</b> | <b>B6-008</b> | 3"    | 89               | 73  | 50 | 27 | 125 | 136 | 61,93 | 106,38 | M16x50             | 4337            | 135                       |
| <b>200.203.J3312ST</b> | <b>B6-009</b> | 3"1/2 | 103              | 89  | 50 | 27 | 138 | 154 | 69,85 | 120,65 | M16x50             | 4387            | 35                        |
| <b>200.203.J3400ST</b> | <b>B6-010</b> | 4"    | 115              | 99  | 50 | 27 | 148 | 164 | 77,77 | 130,18 | M16x50             | 4437            | 35                        |
| <b>200.203.J3500ST</b> | <b>B6-018</b> | 5"    | 141              | 120 | 50 | 28 | 181 | 185 | 92,08 | 152,40 | M16x50             | 4537            | 35                        |

Spécifications :  
Matière : Acier (ASTM A 105)  
Livré avec vis, rondelles et joint O-Ring  
Disponible avec vis UNC





| Code de commande       | Ancien code    | SAE   | Dimensions en mm |    |    |    |     |     |       |        | Vis CHC<br>Classe 8.8 | O-Ring<br>70 shore |
|------------------------|----------------|-------|------------------|----|----|----|-----|-----|-------|--------|-----------------------|--------------------|
|                        |                |       | A                | B  | C  | D  | G   | H   | I     | L      |                       |                    |
| <b>200.203.J6038ST</b> | <b>B90-019</b> | 3/8"  | 17,5             | 10 | 36 | 18 | 48  | 58  | 18,24 | 40,49  | M8x30                 | 4075               |
| <b>200.203.J6012ST</b> | <b>B6-011</b>  | 1/2"  | 21,6             | 13 | 36 | 18 | 48  | 58  | 18,24 | 40,49  | M8x30                 | 4075               |
| <b>200.203.J6034ST</b> | <b>B6-012</b>  | 3/4"  | 28               | 18 | 36 | 18 | 54  | 72  | 23,80 | 50,80  | M10x40                | 4100               |
| <b>200.203.J6100ST</b> | <b>B6-013</b>  | 1"    | 34               | 22 | 44 | 24 | 67  | 81  | 27,76 | 57,15  | M12x40                | 4131               |
| <b>200.203.J6114ST</b> | <b>B6-014</b>  | 1"1/4 | 42,8             | 28 | 44 | 25 | 78  | 95  | 31,75 | 66,68  | M12x45                | 4150               |
| <b>200.203.J6112ST</b> | <b>B6-015</b>  | 1"1/2 | 48,6             | 32 | 51 | 29 | 90  | 107 | 36,50 | 79,38  | M16x50                | 4187               |
| <b>200.203.J6200ST</b> | <b>B6-016</b>  | 2"    | 61               | 41 | 70 | 35 | 117 | 136 | 44,45 | 96,82  | M20x70                | 4225               |
| <b>200.203.J6212ST</b> | <b>B6-017</b>  | 2"1/2 | 76,6             | 50 | 75 | 45 | 151 | 167 | 58,70 | 123,80 | M24x90                | 4275               |
| <b>200.203.J6300ST</b> | <b>B6-018</b>  | 3"    | 90               | 58 | 90 | 55 | 179 | 209 | 71,40 | 152,40 | M30x110               | 4337               |

Spécifications :

Matière : Acier (ASTM A 105)

Livré avec vis, rondelles et joint O-Ring

Pression de service : 420 bar

Disponible avec vis UNC

